

Model RL Round Louver



Features

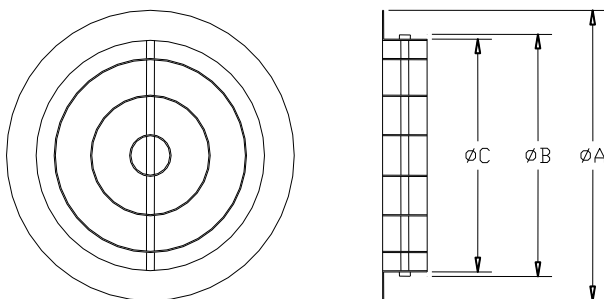
- Aluminium or stainless steel construction.
- Wall or ceiling mountable.
- Hidden mounting mechanism.
- High quality.
- Available for standard duct.

Finish

- Stainless steel construction.
Standard finish is 304 or 316.
- Aluminium construction.
Standard finish is white baked enamel.
Special colour finishes.

Model RL round Louver are designed for exhaust applications for commercial and industrial projects. It can be wall or ceiling mounted. The body is one piece aluminium or stainless steel and mounts with the included hidden bracket.

Dimension



Order Size	ΦNeck size (mm)
100	100
125	125
150	150
200	200
250	250
300	300

Order Code

